

OKLAHOMA DEPARTMENT OF TRANSPORTATION					
FED. ROAD DIST. NO.	STATE	PROJ. NO.	FISCAL YEAR	SHEET NO.	TOTAL SHEETS
6	OKLA.				
DESCRIPTION			REVISIONS	DATE	

L-42-659, N4 CORNER OF SECTION 3, T18N, R4W, I.M., LOGAN COUNTY, OKLAHOMA. SET #4 REBAR AND PLS 1071 CAP HALF WAY AND ON LINE FROM CORNER 0.5 MILES EAST AND WEST OF THIS LOCATION. FILED NEW CCR.

L-42-658, NWCORNER OF SECTION 3, T18N, R4W, I.M., LOGAN COUNTY, OKLAHOMA. SET #4 REBAR ON LINE WITH CORNERS FOUND 0.5 AND 1.0 MILES SOUTH. THE LOCATION OF THIS CORNER FITS DISTANCE TO FOUND MONUMENT 1.0 MILES NORTH OF THIS LOCATION. FILED NEW CCR FOR THIS CORNER LOCATION.

L-42-657, W4 CORNER OF SECTION 3, T18N, R4W, I.M., LOGAN COUNTY, OKLAHOMA. FOUND #4 REBAR IN PLACE PER CCR FILED BY PLS 864. USED THIS CORNER AND FILED NEW CCR FOR THIS LOCATION.

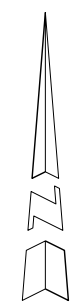
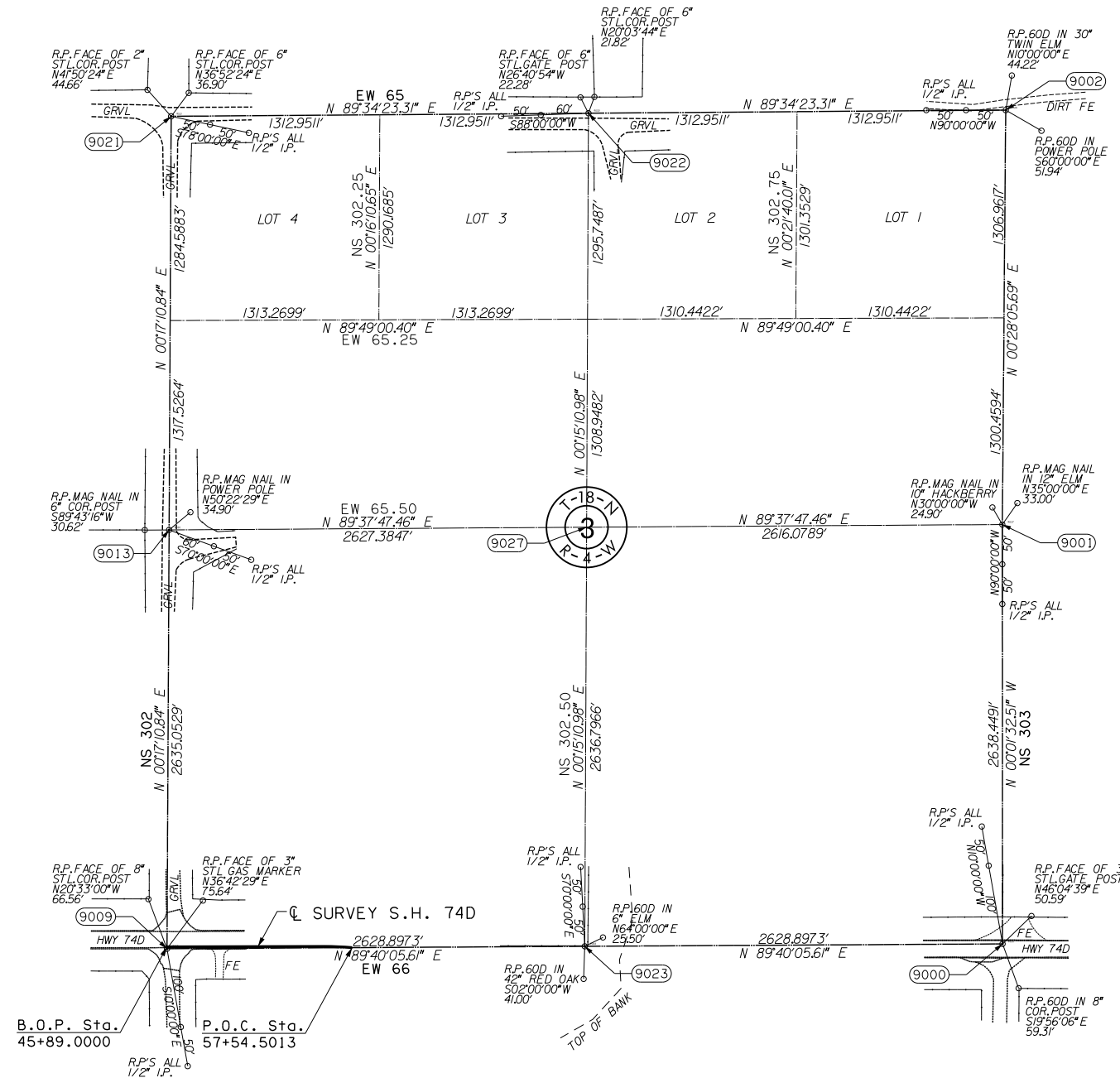
L-42-655, SWCORNER OF SECTION 3, T18N, R4W, I.M., LOGAN COUNTY, OKLAHOMA. FOUND MAG NAIL IN PLACE PER CCR FILED BY PLS 1505. ACCEPTED THIS CORNER AS IT APPEARS TO FIT O.D.O.T. HIGHWAY PLANS. FILED NEW CCR FOR THIS CORNER LOCATION.

L-42-543, NECORNER OF SECTION 3, T18N, R4W, I.M., LOGAN COUNTY, OKLAHOMA. FOUND #4 REBAR IN PLACE THAT FITS CCR FILED BY PLS 1395. USED THIS CORNER AND FILED NEW CCR.

L-42-546, E4 CORNER OF SECTION 3, T18N, R4W, I.M., LOGAN COUNTY, OKLAHOMA. FOUND #4 REBAR WITH CA 2054 CAP IN PLACE PER CCR FILED BY PLS 1395. USED THIS CORNER AND FILED NEW CCR FOR THIS LOCATION.

L-42-551, SECORNER OF SECTION 3, T18N, R4W, I.M., LOGAN COUNTY, OKLAHOMA. FOUND #4 REBAR WITH CAP STAMPED C.A. 2054 IN PLACE PER CCR FILED BY PLS 1395. THIS CORNER FITS ODOT PLANS AS WELL AS MONUMENTS FOUND 0.5 MILES NORTH AND SOUTH OF THIS LOCATION. FILED NEW CCR FOR THIS CORNER.

L-42-656, S4 CORNER OF SECTION 3, T18N, R4W, I.M., LOGAN COUNTY, OKLAHOMA. SET #4 REBAR WITH PLS 1071 CAP HALF WAY AND ON LINE FROM CORNERS FOUND 0.5 MILES EAST AND WEST OF THIS LOCATION. FILED NEW CCR FOR THIS CORNER LOCATION.



SCALE:
1" = 500'

OKLAHOMA DEPARTMENT OF TRANSPORTATION				
SURVEY DIVISION				
SURVEY DATA SHEET				
PLS	JLC			
DRAWN	BJC			
CHECKED	JLC			
APPROVED	JLC			
CREW	CARROLL	SWO 4938 (1)	STATE JOB NO. 28312(04)	SHEET NO. 508